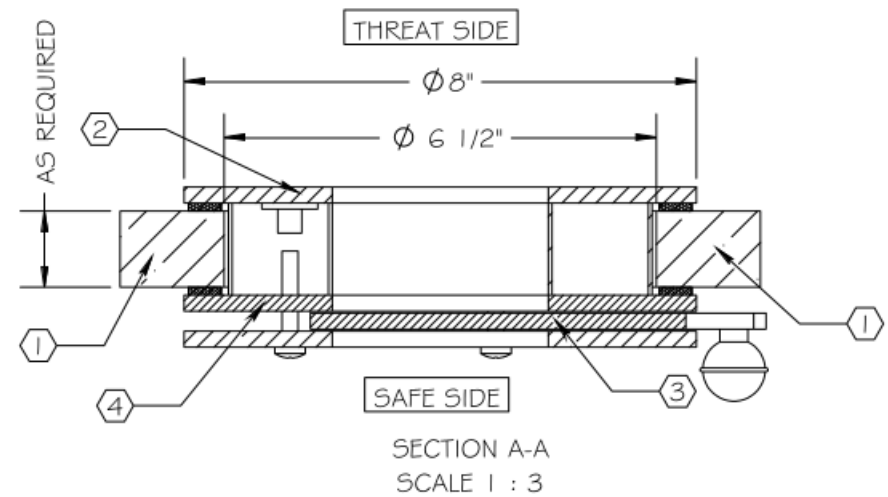
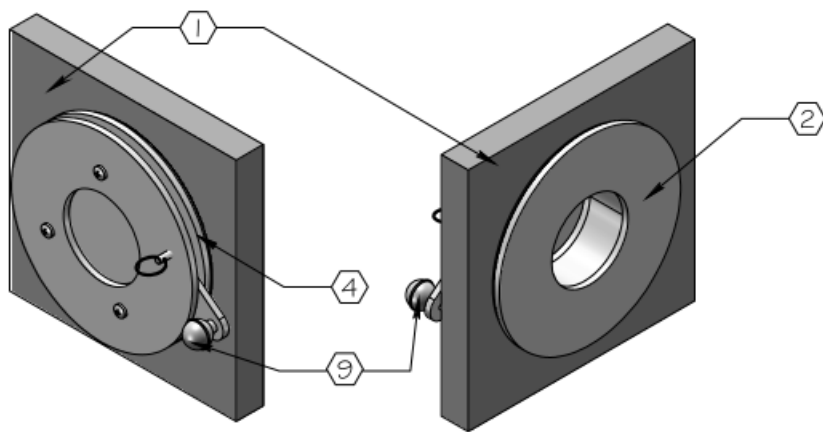
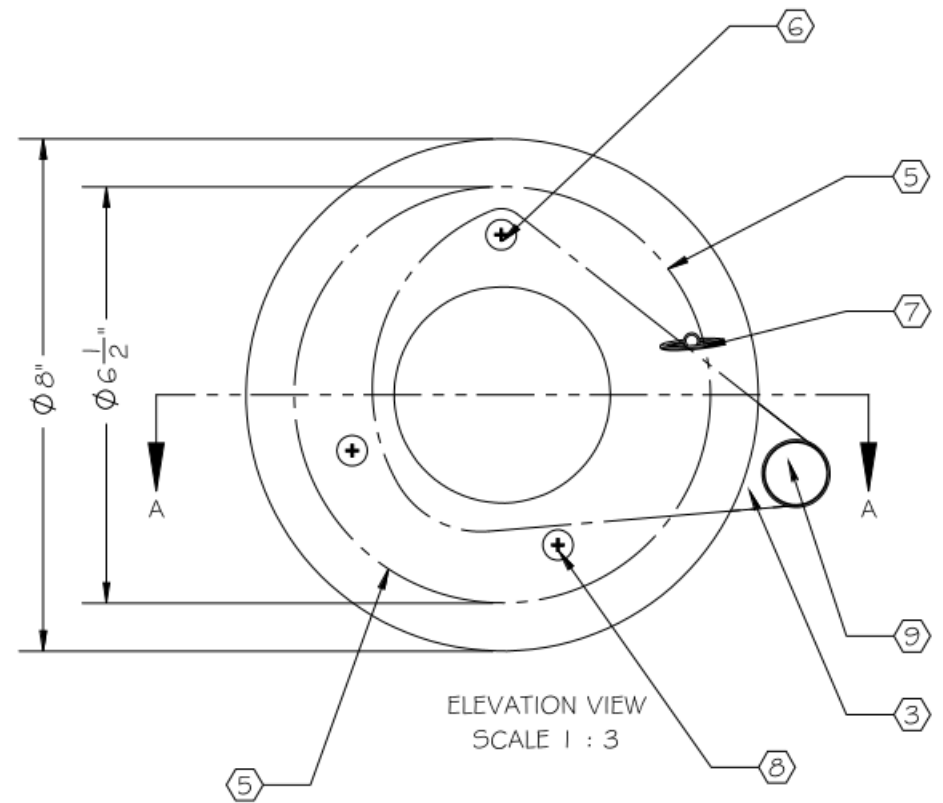



NOTES:

- ① BULLET RESISTANT GLAZING
- ② STAINLESS STEEL FACEPLATE
- ③ BALLISTIC STEEL PIVOT PLATE
- ④ BALLISTIC STEEL INTERIOR PLATE
- ⑤ HOLE IN GLAZING TO BE 6 1/2"
- ⑥ PIVOT (INSTALL AT TOP DEAD CENTER)
- ⑦ REMOVABLE LOCKING PIN
- ⑧ STOP
- ⑨ KNOB



SCALE: AS NOTED	TITLE: PIVOT GUNPORT	UNLESS OTHERWISE SPECIFIED: DIMENSIONS ARE IN INCHES TOLERANCES: FRACTIONAL: $\pm 1/16"$ ANGULAR: $\pm 1^\circ$ TWO PLACE DECIMAL: $\pm .01$ THREE PLACE DECIMAL: $\pm .005$	 SHIELD SECURITY DOORS TEL 1-866-639-1507 EMAIL info@shieldsecuritydoors.com WEB www.shieldsecuritydoors.com
	MODEL: SSD-3BR-PGP		
	SHEET NUMBER: 1 OF 1		